

MAC-10D Diesel Transporter



- Four-wheel fully enclosed spring applied wet disc brakes.
- Soft Ride five point rubber mounted front suspension with Air-Ride.
- Hydrostatic transmission with 6000# planetary wheel units.
- MSHA approved 41 HP ISUZU or Deutz 48 to 78 HP turbo engine.
- Fourteen passengers.
- Automatic parking brake.
- Low Speed: 11 1/2 MPH. (Std.)
- High Speed: 18 MPH. (78 hp only)
- Manual or Automatic/Manual Fire Suppression system.
- Engine in rear provides traction, ease of service, and places noise behind passengers.

DAMASCUS
Corporation

"We get around UNDERGROUND!!"

Phone: 276-676-2376 or 800-390-7636

Mailing Address:

PO Box 610

Abingdon, VA 24212

<http://www.damascuscorp.com>

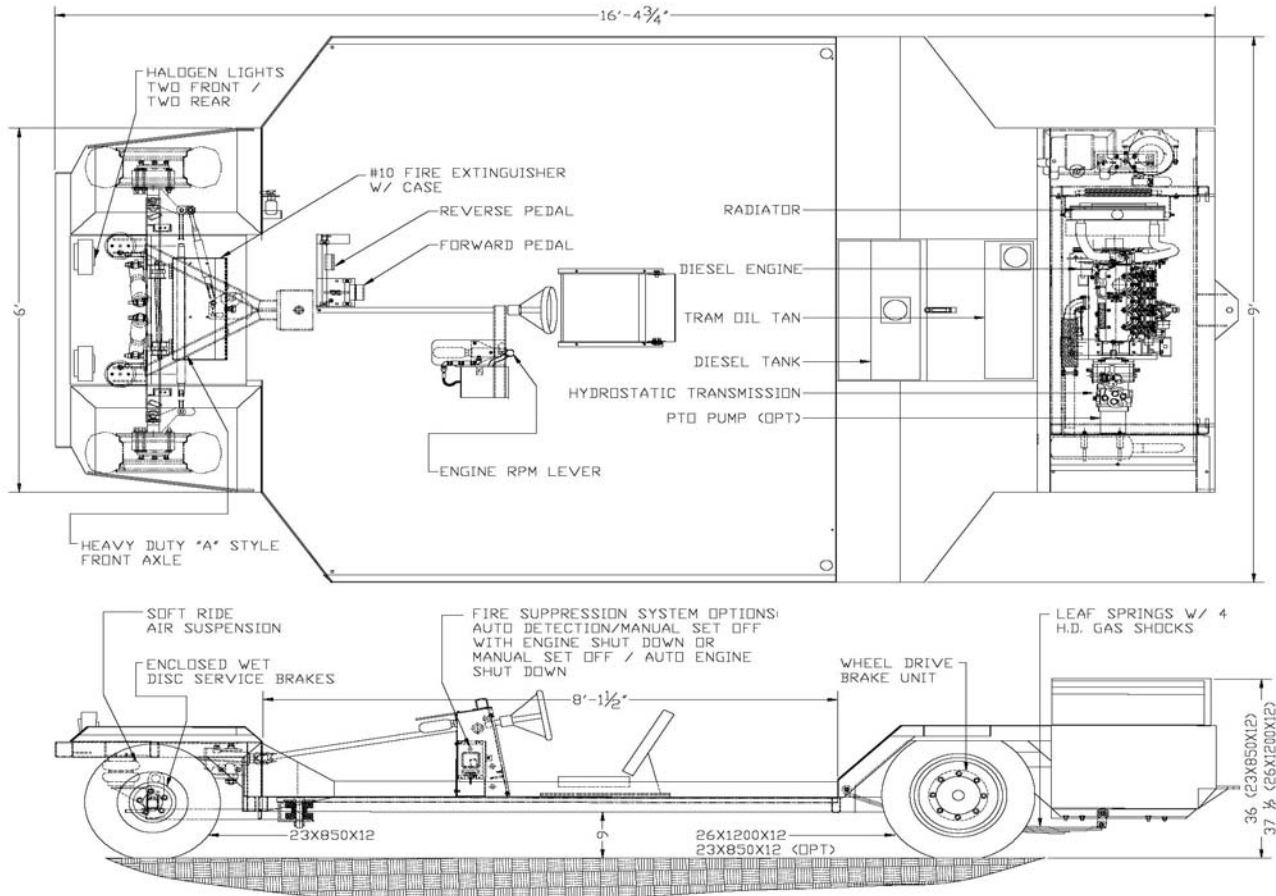
Fax: 276-676-0300

Shipping Address:

26864 Watauga Road

Abingdon, VA 24211

e-mail: damascus@naxs.com



Specifications: MAC-10D Diesel Transporter

Dimensions:	Height: 37 1/2" Isuzu (41" Deutz) Width: 9'-0" Length: 16'-4 3/4" Turning Radius: 13'-6" I.S. Ground Clearance: 9" Standard	Drive:	Hydrostatic, using dual wheel drive units mounted on support tube with planetary gearing, integral spring-applied brake, Wheel unit capacity 6000 lbs (Std.); 14000 lbs (78 hp 2-speed opt)
Weight:	2850#	Suspension:	Front – Rubber mounted A frame style axle with new Soft Ride air suspension and heavy-duty gas shocks. Automotive type tie rods Rear – HD leaf springs with heavy duty gas shocks and rubber overload bumpers
Payload:	3000#, 14 Men	Fire Suppression:	Standard - Ansul manual actuated with engine shut-off. Optional – Ansul automatic/manual actuated with engine shutoff "Check Fire System"
Performance:	Speed 11.5 mph std. 18 mph (78 hp 2-speed opt). Grad ability at maximum speed 15%, maximum operating grade 18%	Fire Extinguisher:	#10 fire extinguisher, bracket and guard
Engine:	Isuzu 4LC1 41 HP; optional Deutz F3L2011 48 HP or BF4L2011 78 HP. These engines meet MSHA requirements for use in underground mining under Part 7, Title 30 CFR. Out by use only	Tires:	Front: 23 x 850 x 12 - 6 ply Rear: 26 x 12 x 12 - 8 Ply Rating (std.). 10-16.5 (78 hp 2-speed opt)
Electrical:	12 Volt	Capacities:	Diesel fuel – 12.25 gallons. Hydraulic oil – 12.6 gallons
Headlights:	Two front, two rear, halogen, 12volt	Options:	Hydraulic power take-off (PTO), Canopy, Seating, and Tires. Contact Mfg. for more...
Brakes:	Four-wheel wet disc brakes, spring applied, pressure release w/ automatic parking brake feature, Rear hydrostatic hold-back.		